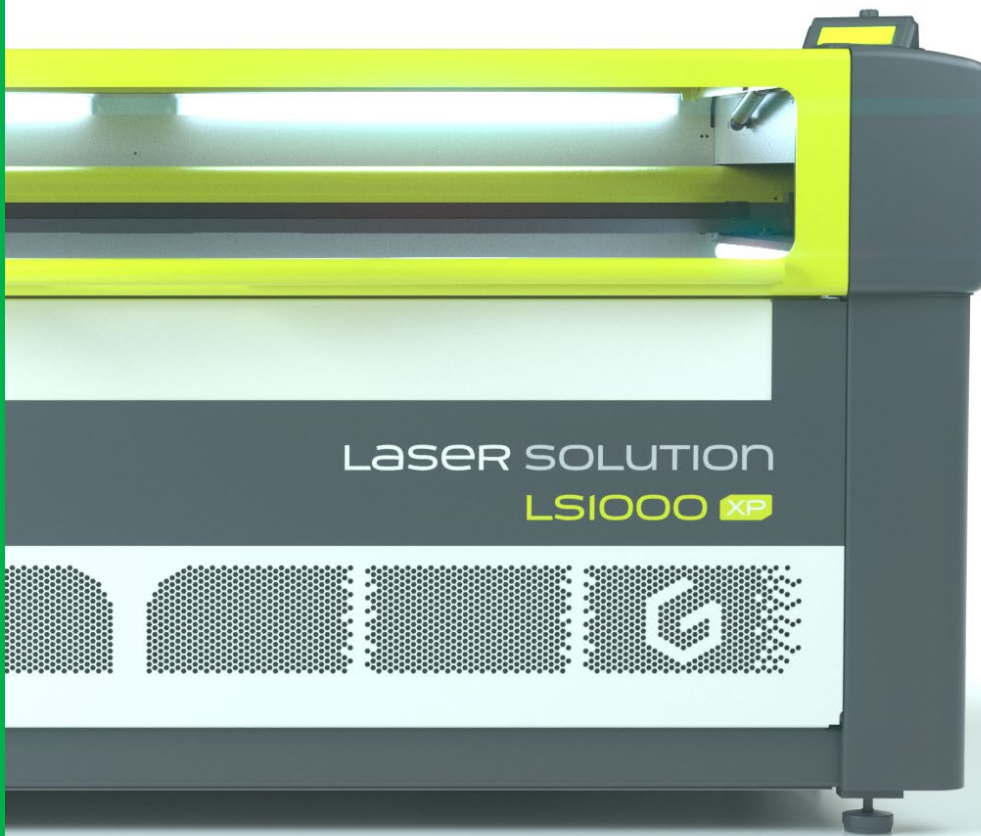




LASER TABLE

**LS1000XP**

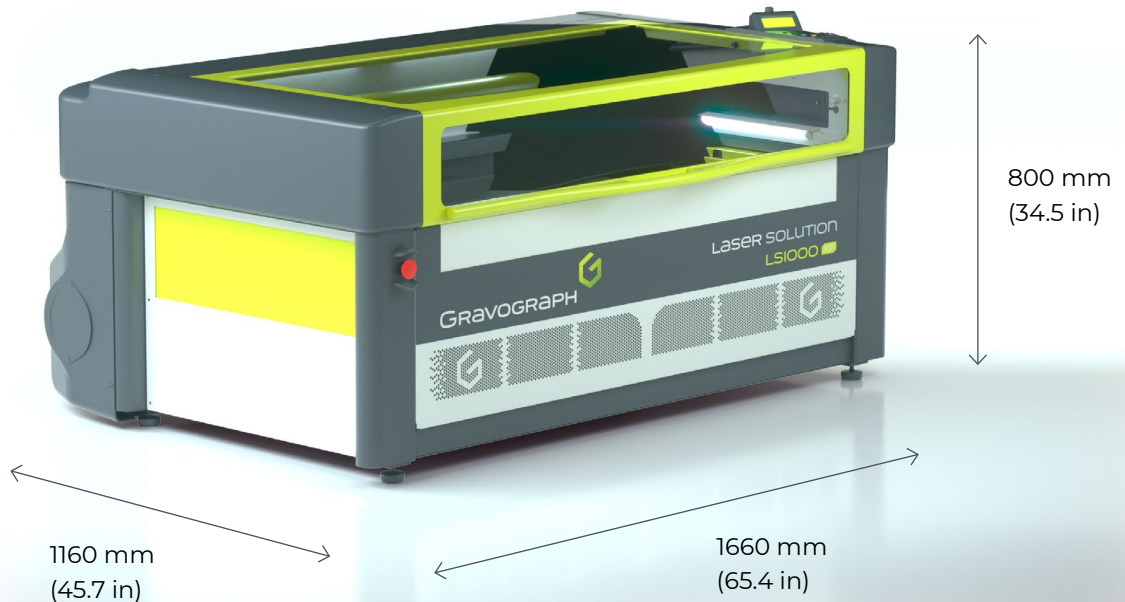


**GRAVOTECH**  
EXPRESSION OF THINGS



## LASER TABLE LS1000XP

Numerous innovative functions and features are combined into the LS1000XP, turning it into the ultimate engraving and cutting laser for intensive production.



### HIGH PRODUCTIVITY LASER MACHINE

Our powerful and versatile CO2 laser engravers use a 10600 nm wavelength in the infrared range, which provides a precise and permanent marking on a wide range of materials such as natural materials (wood, leather, paper, fruits & vegetables), transparent material (glass, transparent plastics) and coated materials (painted surfaces, anodized aluminum).

### MADE FOR CUTTING APPLICATIONS

Easily cut plastic, acrylic, wood, rubber, paper, and more to create quality signage and personalized items. The LS1000XP laser comes with cutting accessories such as a collection tray, a cutting table with removable slats and more. Powerful CO2 sources are available, up to 150W for heavy-duty jobs.

### INCREASED USABILITY FOR REDUCED PRODUCTION TIMES

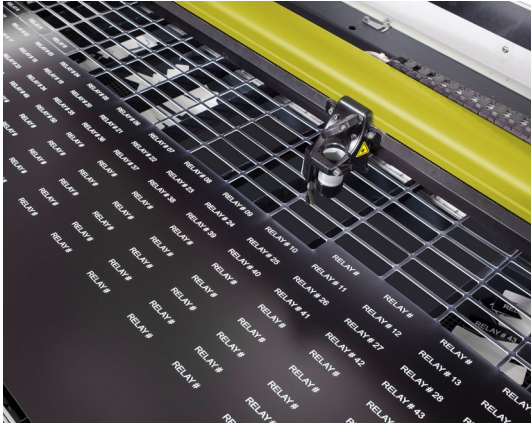
The front-loading and double pass-through of the LS1000XP machine offer total accessibility: front and sides doors on the chassis ease the loading of heavy or oversized items. Use the red pointer to position your engraving or cutting starting point, and reduce the risk of error.

SEE OUR VIDEO



Large laser engraving and cutting machine  
for high productivity

# KEY FEATURES



## Large items engraving and cutting

Engrave and cut large items thanks to the LS1000XP vertical capacity of 300mm.

Cylindrical engraving is possible up to 200mm diameter with the rotary device.

Personalize large glass items such as bottles, vases and carafes, and create unique trophies and 3D awards.

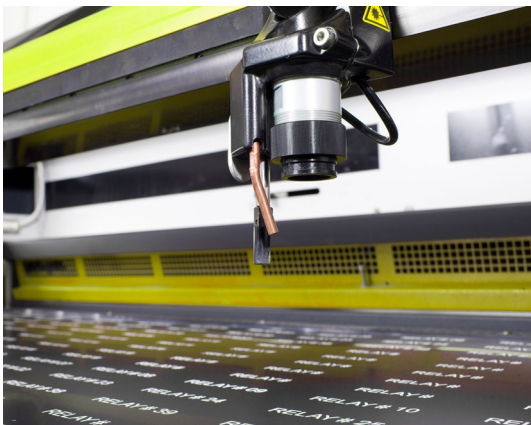


## Print & Cut option

Combine the Print & Cut option with the LS1000XP cutting capacity to create unique items.

Print on plastic, acrylic, wood, paper, and more with any printer, and laser-cut around the printing.

Create personalized signage, awards, on-demand displays, advertising stands, and so much more.



## Wide laser lens range

Focusing optics are key to precisely set-up the laser engraving precision or cutting efficiency.

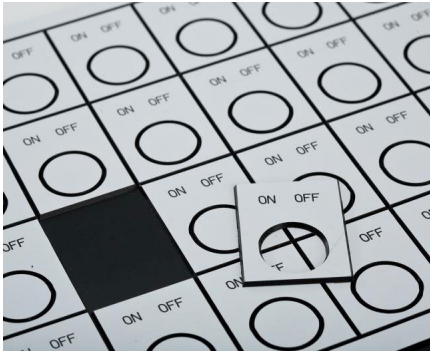
Choose the right lens for your engraving or cutting application among our extended range.

Open your business to new possibilities by selecting the perfect lens for any job!

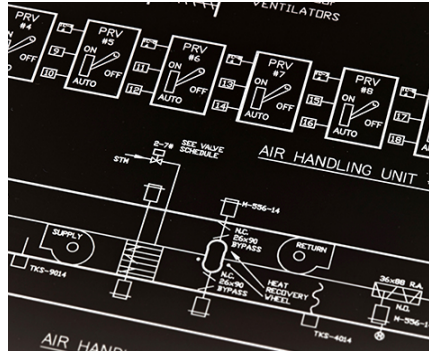
LEARN MORE ABOUT THE LS1000XP



# APPLICATIONS



Badges, tags engraving and cutting



Front panel



Wood cutting and engraving



Large letters cutting - signage



POP Displays engraving and cutting



Batch gift engraving

# MATERIAL CHARACTERISTICS

Technology		CO2
Materials	Wood, varnished wood	◀ ○ ▶
	Glass, Crystal	●
	Leather	●
	Paper, cardboard, cork	◀ ▶
	Food	●
	Ceramic	●
	Plastics	◀ ▶
	Coated Metal, Anodized Aluminum	●

Cutting = ◀ ▶ Engraving / deep marking = ○ Marking / etching = ●

MAKE YOUR SAMPLES



## SOFTWARE

### GRAVOSTYLE™



**Expert software made by engravers for engravers**  
Gravostyle™ is a professional engraving and cutting software that puts Gravotech engraving expertise in reach. Benefit from advanced possibilities and save time! Unique features available: Braille, Photostyle, Print & Cut, and more.

#### Complete engraving process mastered

Due to our history of making engraving machines, we have a full understanding of the engraving process. Gravostyle™ is fully compatible with all of our technologies. The software/machine interaction streamlines and improves your day-to-day engravings with functions like Point & Shoot.

#### Gravostyle™: unique software for laser and rotary

Are you already using Gravostyle™ on your rotary machine, and expanding your business with a laser? No need to learn how to use another software, switch in one click on the Gravostyle™ interface to set-up laser engraving!

## SERVICE & SUPPORT



### Training

Our training modules are designed to optimize your use of our solutions and are available for our full range of machines, software and accessories.



### Technical support

We bring you local support in your language in more than 50 countries, where we have established presence directly and with our distribution partners.



### Maintenance

Thanks to experience gathered with Gravograph and Technifor and our global presence in more than 50 countries with 150 Gravotech technicians and our distributor partners, we can offer you a wide range of services.

# TECHNICAL DATA

## LS1000XP

<b>Laser source / technology</b>	CO2
<b>Available Power version</b>	60W - 80W - 100W - 150W
<b>Available lenses</b>	2.0" - 3.0" - 4.0"
<b>Dimensions (L x W x H)</b>	1660 mm (65.354 in) x 1160 mm (45.669 in) x 800 mm (31.496 in)
<b>Machine weight</b>	220kg (485.017 lb)
<b>Marking area max</b>	1220 x 610 mm (48 x 24 in)
<b>Max object height</b>	300 mm (11.8 in)
<b>Max. object weight</b>	25 kg (55.116 lb)
<b>Automatic Z axis</b>	300 mm (11.811 in)
<b>Noise level</b>	≤ 66 dB
<b>Speed</b>	4000 mm/s (157.480 in/s)
<b>Point &amp; shoot</b>	Yes
<b>Operating temperature</b>	10°C - 35°C (50°F - 95°F)
<b>Connection to computer</b>	USB
<b>Laser safety classification</b>	CDRH: Class 2
<b>Beam diameter</b>	0.1 mm (0,004 in) to 0.4mm (0,016 in)
<b>Software</b>	Gravostyle™



**GRAVOTECH**  
EXPRESSION OF THINGS

[info.uk@gravotech.com](mailto:info.uk@gravotech.com)

+44 1926 884433

[gravotech.co.uk](http://gravotech.co.uk)

**GRAVOTECH LTD**

Unit 3 Trojan Business Centre,  
Tachbrook Park Drive, Leamington Spa  
CV34 6RH, Warwickshire, United Kingdom

**Follow us:**

