



DOT PEEN STATION

**IMPACT**



**GRAVOTECH**

by  **BRADY**



The Impact is a standalone metal engraving machine easy to configure and master. Take your business to the next level, whatever its size and expertise.



### **TOUCH & MARK**

The large colour touchscreen and onboard control software make training a thing of the past. The intuitive system allows you to start marking text, logos and 2D codes straight away. It makes the operator's life easy and does not require a computer.

### **I-SENSE**

The I-Sense function (Impact eZ m) detects the surface of the workpiece, automatically adjusts the height of the Z-axis and starts marking with no intervention on the part of the operator. Several adjustment modes are available: automatic mode (I-Sense), programmable mode and normal mode, which allows manual adjustment.

### **DYNAMIC DOT CONTROL**

Obtain a perfect result every time with the IMPACT DDC™ (Dynamic Dot Control, on Impact m and eZ m) feature, a technology which enables automatic adjustment of point density according to the required size and depth of marking.

[SEE OUR VIDEO](#)



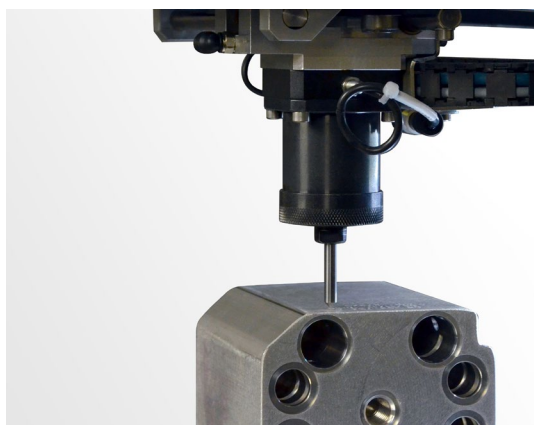
## KEY FEATURES



### For all your marking applications

The IMPACT range makes it possible to perform precise and high-quality marking on a large number of materials:

- Metal plate engraving (steel and painted steel, aluminum, brass, iron, steel, raw and anodized aluminum)
- Plastics (ABS, PA, PP).



### Go to marking station

From single part markings to small batches, the IMPACT is loved for its size and versatility.

From the traceability of the smallest components to the identification of the heaviest and most voluminous parts, everything is possible thanks to the 300mm clearance and the open structure of the machine.

Used in automotive, aerospace, medical, and by heavy and light industries, the Impact has become the favorite workstation.



### Ready to go

We took all of our experience working within industrial traceability and created the IMPACT to respond to your specific needs, when both the marking requirements and the parts to be marked are constantly changing.

The IMPACT was created to be the all in one, ready to go solution, with usability at the forefront and designed to be opened and ready to start marking immediately.

LEARN MORE ABOUT PRODUCT



## SOFTWARE



Integrated traceability software with colour touchscreen (no PC required)

### Easy marking management & user interface

Easy to use and powerful, the IMPACT simplifies your marking workflow, making it manageable for any operator: user-friendly interface and navigation in the menus, visualization, marking simulation, easy management of parameters and simple launch of the marking.

You can identify your parts (text, serial numbers, logo), generate unique codes (Datamatrix, QR codes, UID, GSI) and configure your variables, counters and date codes.

### Design for industrial environment

The IMPACT is ultra-resistant and has been designed to fit into any environment, even the most demanding ones.

Its waterproof touch screen is made of reinforced glass and its casing is highly resistant to shocks.

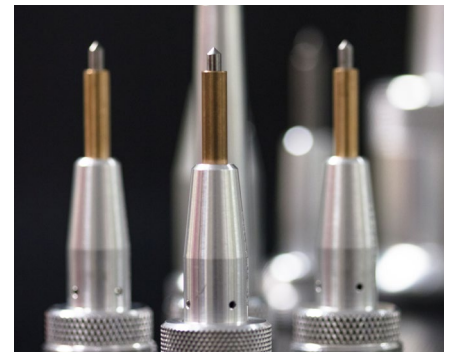
## ACCESSORIES



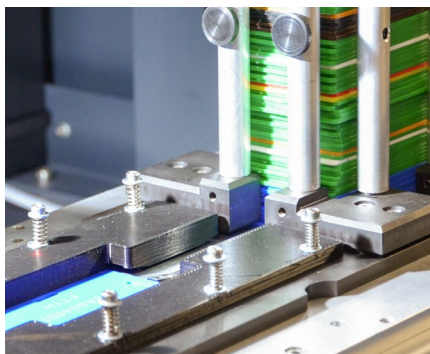
Rotary accessory for cylindrical parts marking



Hand-held or fixed-position scanner for code reading or checking



Wide range of high performance stylus marking tools



APF (Automatic Plate Feeder)



Protective bellow (optional)



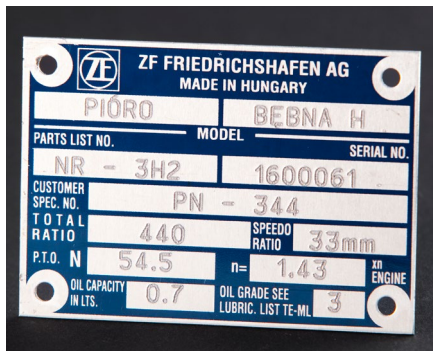
Sound-proof positioning plate with magnetic quick release clamp

MAKE YOUR SAMPLES





## APPLICATIONS



ID plates



Various small parts



Tools



Plastics



Automotive



Painted, coated, raw materials

## SERVICE & SUPPORT



### Training

Our training modules are designed to optimize your use of our solutions and are available for our full range of machines, software and accessories.



### Technical support

We bring you local support in your language in more than 50 countries, where we have established presence directly and with our distribution partners.



### Maintenance

Thanks to experience gathered with Gravograph and Technifor and our global presence in more than 50 countries with 150 Gravotech technicians and our distributor partners, we can offer you a wide range of services.

# TECHNICAL DATA

## IMPACT

|                                |  |  |  |  |
|--------------------------------|--|--|--|--|
| Model                          | IMPACT p   | IMPACT m   | IMPACT eZ p                                      | IMPACT eZ m                                      |
| Technology                     | Pneumatic  | Electromagnetic                                  | Pneumatic  | Electromagnetic                                  |
| Z Axis type                    | Manual, 300 mm (11.81 in)                        |  | Motorized, 300 mm (11.81 in)                     |  |
| Machine dimensions (L x W x H) | 490 x 270 x 704 mm<br>(19.29 x 10.63 x 27.72 in) | 431 x 270 x 704 mm<br>(16.97 x 10.63 x 27.72 in) | 509 x 277 x 637 mm<br>(20.04 x 10.90 x 25.08 in) | 490 x 270 x 704 mm<br>(19.29 x 10.63 x 27.72 in) |
| Marking area                   | 100 x 120 mm (3.94 x 4.72 in)                    |  |  |  |
| Communication interfaces       | RJ45, USB(x2), RS232, Process IOs                |  |  |  |
| Embedded fonts                 | 10   |  |  |  |
| Display                        | 7" color touchscreen                             |  |  |  |
| Languages available            | 19   |  |  |  |
| 2D codes                       | Datamatrix, QR Codes                             |  |  |  |
| Rated power consumption        | 130 VA   |  |  |  |
| Input voltage                  | 100 - 240 V AC                                   |  |  |  |
| Compressed air supply          | 2 - 6 Bar  | N/A  | 6 Bar  | N/A  |
| Operating temperature          | 5° to 45° (41 to 113 F)                          |  |  |  |
| Machine weight                 | 26 kg (57.32 lbs)                                | 26.5 kg (58.42 lbs)                              | 26 kg (57.32 lbs)                                | 26.5 kg (58.42 lbs)                              |
| Rotary Device (option)         | RD1, RD2   |  |  |  |



info.uk@gravotech.com  
+44 1926 884433  
gravotech.co.uk

**GRAVOTECH LTD**  
Unit 3 Trojan Business Centre,  
Tachbrook Park Drive, Leamington Spa  
CV34 6RH, Warwickshire, United Kingdom

Distributed by:



Follow us:



gravotech.off



Gravotech Group



Gravotech



Gravotech - Gravograph