



LASER STATION

**WELASE™**

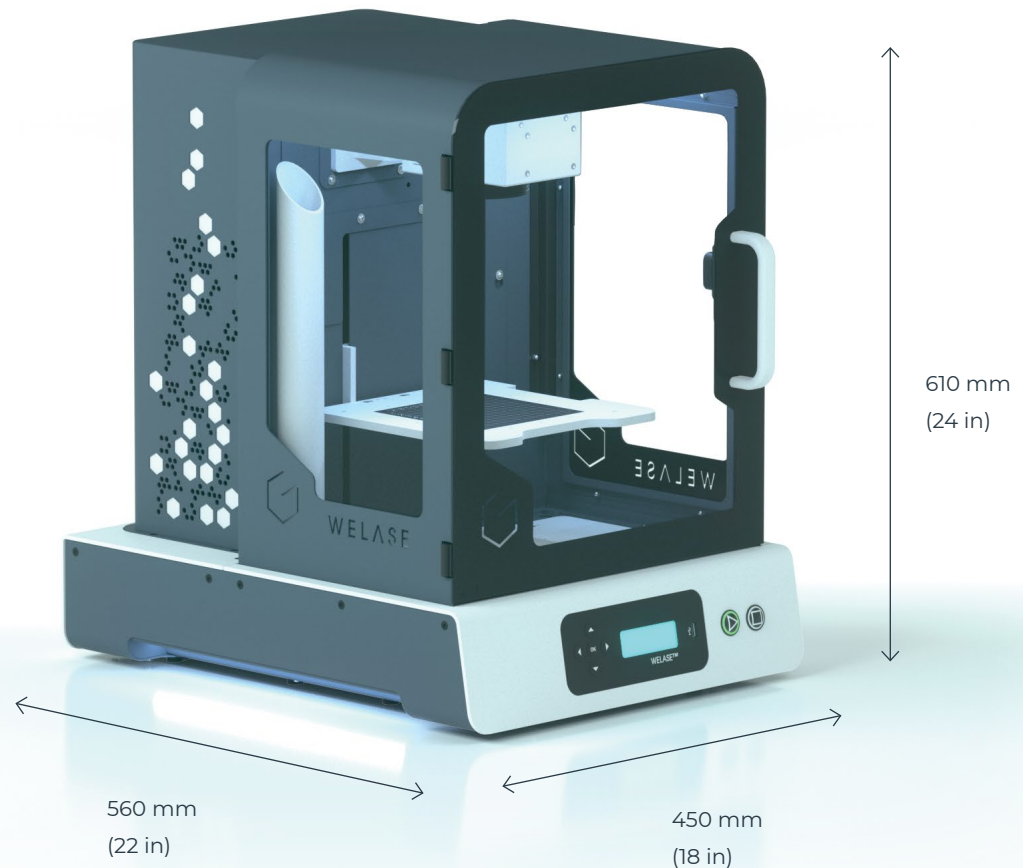


**GRAVOTECH**

by  **BRADY**



WeLase is a compact laser marking station for jewellery engraving, personalising objects and part identification. Its high-speed, high-quality markings and large window allow you to control the engraving or marking at any time.



### **LASER ENGRAVER FOR EVERY MATERIAL**

The WeLase is available with Fiber, MOPA, Hybrid, Green or CO2 laser sources to achieve the best results on a wide range of materials. With many options and accessories, this small laser engraver can be configured to your specific needs and items. For example: engrave the inside of rings made of precious metals, personalisation of perfume bottles, mechanical parts in stainless steel, plastic containers, wood cutting boards or leather goods, and many other possibilities!

### **COMPACT LASER MARKING MACHINE**

Small footprint, quiet, with a modern design and large viewing windows, this laser marking machine has been designed with high-durability in mind. Meeting the most stringent global safety regulations, Class 1 certification, WeLase is perfect for public and work-related.

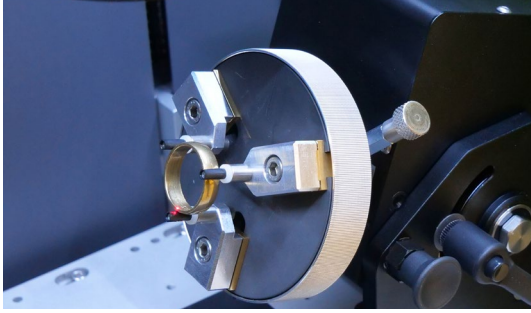
### **HIGH-END LASER TECHNOLOGY MADE SIMPLE**

With our professional compact laser engraver, even without prior experience, you can benefit from our cutting-edge technology in an easy-to-use laser marking station. The WeLase™ comes with various features that fit your needs: a high-speed galvanometric marking head, an automatic height-adjustable for a better laser beam focus, previews of the proper positioning of your objects and plenty of positioning jigs. This small laser engraver is available with our range of software, from “no training required” (ABC, Catalog) to “expert” (Gravostyle™, Lasertrace).

SEE OUR VIDEO



## ACCESSORIES



### Pack Jewel

The WeLase becomes the perfect jewellery engraving machine with precise positioning of jewellery.

It produces contrasted results, white markings or deep engravings on the interior/exterior of rings or bracelets. It can also cut thin flat items.



### Pack Easy Fix

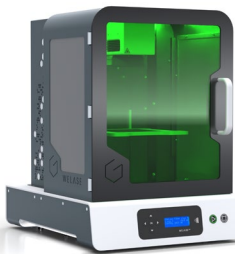
With this pack, you can easily place pens, bottles, flasks, in the set of positioning tools and quickly reposition the next object to mark.

- Versatile: from a pen to a bottle with the same clamp.
- No clamping, no chucks, instant item positioning.



### Pack Safe Air

Compact exhaust with HEPA filters for every environment. Silently extract fumes and particles to keep the machine in perfect working condition and the workspace clean and odourless. Its small size makes it ideal for retail spaces.



## COMPACT LASER FOR PART MARKING

The WeLase™ is also adapted for direct part marking. From equipment nameplates to hydraulic valves and everything in-between, this laser marking machine can identify plastic and metal parts with a serial number, logo, or 2D code (such as a Datamatrix or QR code) thanks to our industrial software, Lasertrace™. The optional side metal plates add resistance to the machine, while the bluescreen shows important information and error-codes.

LEARN MORE ABOUT  
THE WELASE™



## SOFTWARE



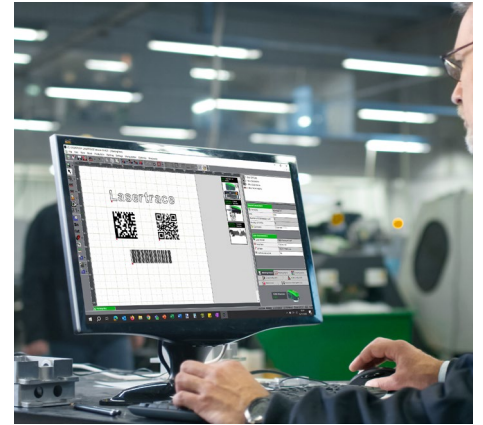
### Catalog

Do you have a limited range of products to engrave? Catalog is the right choice for you! Contact us for a customized software version, integrating your own range of products.



### Gravostyle™

One-of-a-kind piloting software for Gravotech laser and rotary engraving machines.



### Lasertrace

Lasertrace is a unique software specially designed to create marking files to be loaded in the laser system. It includes a graphic composition to add text, logos and codes like Datamatrix in your marking templates.

## SERVICE & SUPPORT



### Training

Our training modules are designed to optimize your use of our solutions and are available for our full range of machines, software and accessories.



### Technical Support

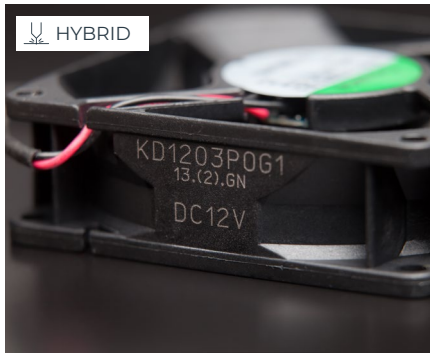
We bring you local support in your language in more than 50 countries, where we have established presence directly and with our distribution partners.



### Maintenance

Thanks to experience gathered with Gravograph and Technifor and our global presence in more than 50 countries with 150 Gravotech technicians and our distributor partners, we can offer you a wide range of services.

# APPLICATIONS



Traceability of industrial parts



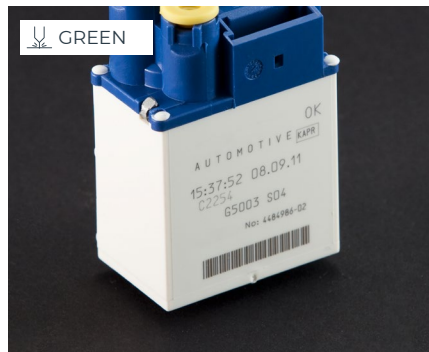
Cutting & engraving



Marking tools for identification and equipment traceability



Cosmetics & luxury



Automotive marking



Gifts & personalisation

# MATERIAL CHARACTERISTICS

Technology		FIBER	GREEN	HYBRID	MOPA	CO2
Materials	Metals	◄◄◻◻◻	◻	◻	◄◄◻◻◻	
	Plastics	◻	◻	◻	◻	◄◻◻
	Glass, crystal					◻
	Wood, varnished wood		◻			◄◻◻◻
	Leather		◻			◻
	Textiles					◻
	Paper, cardboard, cork					◄◻◻
	Engraving materials	◄◄◻◻◻	◄◄◻◻◻	◄◄◻◻◻	◄◄◻◻◻	◄◄◻◻◻

◄◄ = Cutting   ◻ = Engraving / Deep Marking   ◻ = Marking / Etching

MAKE YOUR SAMPLES



# TECHNICAL DATA

## WELASE™

Model	CO2	FIBER	GREEN	HYBRID	MOPA
					
<b>Laser technology</b>	CO2	Fiber	Green (DPSS)	Hybrid (DPSS)	MOPA
<b>Machine dimensions (L x W x H)</b>	450 x 560 x 610 mm (18 x 22 x 24 in)				
<b>Weight</b>	44 kg (97 lbs)	42 kg (92.6 lbs)	39 kg (86 lbs)	39 kg (86 lbs)	40 kg (88.2 lbs)
<b>Engraving area</b>	100 x 100 mm (4 x 4 in)	110 x 110 mm (4.33 x 4.33 in)	110 x 110 mm (4.33 x 4.33 in)	110 x 110 mm (4.33 x 4.33 in)	110 x 110 mm (4.33 x 4.33 in)
<b>Max object size (L x W x H)</b>	340 x 200 x 180 mm (13.4 x 8 x 7 in)	340 x 200 x 100 mm (13.4 x 8 x 4 in)	340 x 200 x 100 mm (13.4 x 8 x 4 in)	340 x 200 x 100 mm (13.4 x 8 x 4 in)	340 x 200 x 100 mm (13.4 x 8 x 4 in)
<b>Door type</b>	Manual				
<b>Laser safety classification</b>	Class 1 Door Closed / Class 2M Door Open (Aiming Diode)				
<b>Wavelength</b>	10,600 nm	1,064 nm	532 nm	1,064 nm	1,064 nm
<b>Laser power</b>	30 W	20 W / 30 W	5 W	10 W	30 W
<b>Communication</b>	Ethernet, USB and Wifi				
<b>Software compatibility</b>	Catalog / Gravostyle™ / Lasertrace				Lasertrace
<b>Power supply</b>	100 / 240V AC - 50 / 60Hz				



[info.uk@gravotech.com](mailto:info.uk@gravotech.com)  
 +44 1926 884433  
[gravotech.co.uk](http://gravotech.co.uk)

**GRAVOTECH LTD**  
 14 Wildmere Rd, Banbury OX16 3JU,  
 United Kingdom

Distributed by:



Follow us:



gravotech.off



Gravotech Group



Gravotech



Gravotech - Gravograph